

[Jump to Website](#)

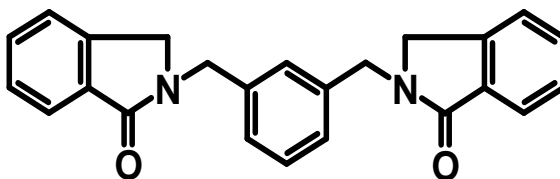
[Request Quote](#)

Product Specifications

2,2'-[1,3-Phenylenebis(methylene)]bis[2,3-dihydro-1H-isoindole-1-one]

Syn: DC-300
CAS 935739-41-6

Structure:



Mol. Formula
Source

$C_{24}H_{20}N_2O_2$
Synthetic

Mol. Wt.

368.43

<i>Test</i>	<i>Specification</i>
Identity	IR
Appearance	White microcryst. solid
Mp	173-175 °C
Assay (hplc)	> 98%
Residual <i>m</i> -Diaminobenzene	< 10 ppm
LOD	< 0.5 %
Ash (residue on ignition)	< 0.1%
Heavy metals	< 10 ppm
Hg	< 2 ppm
As	< 1 ppm

Storage: Maintain in cool, dry containment.