

[Jump to Website](#)

[Request Quote](#)

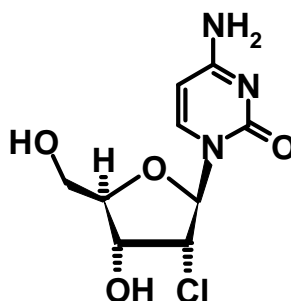
Product Specifications

2'-Deoxy-2'-chlorocytidine

CAS 10212-19-8

Syn: 2-Chloro-2'-deoxycytidine

Structure:



Mol. Formula
Source

C₉H₁₂ClN₃O₄
Synthetic

Mol. Wt.

261.67

<i>Test</i>	<i>Specification</i>
Appearance	White microcryst. solid
TLC	Single spot
Mp	N/A
Assay (hplc)	> 99 %
LOD	< 0.5%
Ash (residue on ignition)	< 0.1%
Heavy metals	< 10 ppm
As	< 1 ppm

Storage: Maintain in cool, dry containment.