

[Jump to Website](#)

[Request Quote](#)

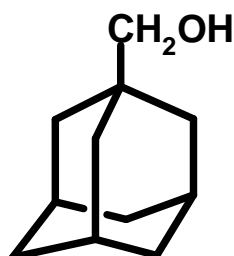
## Product Specifications

### 1-Adamantanyl Methanol

CAS 770-71-8

Syn: 1-Adamantanemethanol

Structure:



Mol. Formula  
Source

C<sub>11</sub>H<sub>18</sub>O  
Synthetic

Mol. Wt.

166.26

<i>Test</i>	<i>Specification</i>
Identity	IR
Appearance	White crystalline powder
Bp	263.1 °C / 760 mm Hg [Lit.]
Mp	115-118 °C [Lit.]
Assay (glpc)	≥ 99 %
LOD	< 1 %
Ash (residue on ignition)	< 0.2 %
Heavy metals	< 10 ppm

*Storage:* Maintain in cool, dry containment.