

[Jump to Website](#)

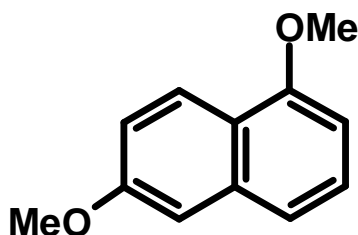
[Request Quote](#)

Product Specifications

1,6-Dimethoxynaphthalene

CAS 3900-49-0

Structure:



Mol. Formula
Source

$C_{12}H_{12}O_2$
Synthetic

Mol. Wt.

188.22

<i>Test</i>	<i>Specification</i>
Identity	Infrared, H-NMR
Appearance	White to off-white microcryst. solid
Mp	56 °C – 58 °C
Assay (glpc)	> 98 %
TLC	One spot
Moisture (K-F)	< 0.5%
LOD	< 0.5% max
Ash (residue on ignition)	< 0.2%

Storage: Maintain in cool, dry containment.