

[Jump to Website](#)

[Request Quote](#)

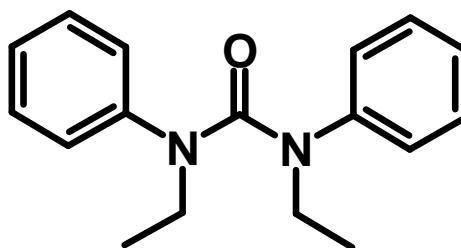
Product Specifications

1,3-Diethyl-1,3-diphenylurea

CAS 85-89-3

Syn: Centralite

Structure:



Mol. Formula
Source

$C_{17}H_{20}N_2O$
Synthetic

Mol. Wt.

268.35

<i>Test</i>	<i>Specification</i>
Identity	IR
Appearance	White to off-white microcryst. powder
Mp	73-75 °C (lit.)
Assay (hplc)	> 98%
LOD	0.5% max
Ash (residue on ignition)	< 0.2 %
Heavy metals	< 10 ppm

Storage: Maintain in cool, dry containment.