

[Jump to Website](#)

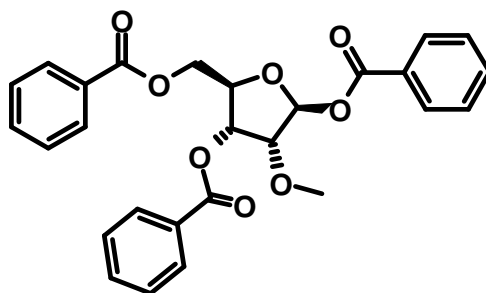
[Request Quote](#)

## Product Specifications

### 1,3,5-Tri-O-benzoyl-2-O-methyl-D-ribose

CAS 68045-07-8

Structure:



Mol. Formula  
Source

$C_{27}H_{24}O_8$   
Synthetic

Mol. Wt.

476.5

<i>Test</i>	<i>Specification</i>
Appearance	White, microcrystalline solid
Mp	N/A
Assay (hplc)	$\geq 98.0\%$
Sp. Rot., $[\alpha]_D$	+83 ° ( $c = 1$ ; $CHCl_3$ )
LOD	< 1%
Ash (residue on ignition)	< 0.2%
Heavy metals	< 10 ppm

*Storage:* Maintain in cool, dry containment.