

## Product Specifications

**Item** 2'-Deoxy -2'-Chlorocytidine

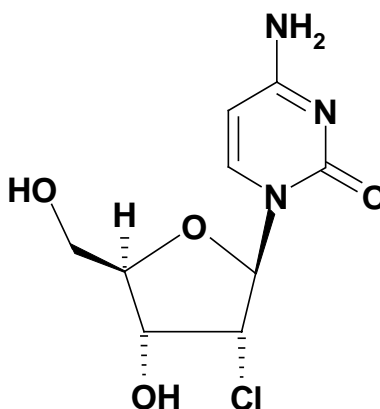
**Syn:** 2-Chloro-2'-deoxycytidine

**CAS No.** 10212-19-8

**Mol. Formula** C<sub>9</sub>H<sub>12</sub>ClN<sub>3</sub>O<sub>4</sub>

**Mol. Weight** 261.67

**Structure**



<i>Test</i>	<i>Specification</i>
<b>Appearance</b>	White crystalline solid
<b>Melting Point</b>	N/A
<b>Assay (hplc)</b>	> 99 %
<b>TLC</b>	Single Spot
<b>Heavy Metals (Pb)</b>	< 10 ppm
As	< 1 ppm
<b>Residue on Ignition</b>	< 0.1%
<b>LOD</b>	< 0.5%
<b>Comment</b>	Store in cool dry containment