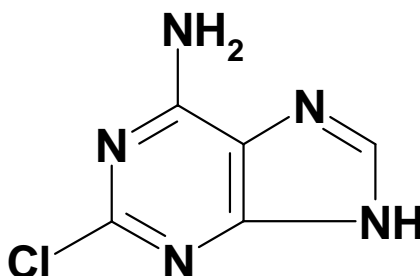


Product Specifications

Item	2-Chloro-6-aminopurine
<i>Syn:</i>	2-Chloroadenine; 2-Chloro-7(9) <i>H</i> -purin-6-ylamine
CAS No.	1839-18-5
Mol. Formula	C₅H₄ClN₅
Mol. Weight	169.57
Structure	



<i>Test</i>	<i>Specification</i>
Appearance	White crystalline solid
Melting Point	N/A
Assay (HPLC)	> 98 %
TLC	Single Spot
Heavy Metals	< 10 ppm
As	< 1 ppm
Residue on Ignition	< 0.1%
LOD	< 0.5%

Comment	Store in cool dry containment
----------------	-------------------------------